



Winscombe Crescent, W5

Set in the heart of the Brentham Garden Estate is this large newly refurbished four-bedroom two-bathroom end of terrace house. The property has been newly refurbished to a high level and comes in turnkey condition.

The home has been styled and developed with families in mind, and the thoughtful design accentuates light and space, with sophisticated and high-quality interiors to ensure a great template for family life and entertaining.

The property is striking in all respects with a large interconnecting reception area, separate kitchen and a WC situated on the ground floor which leads out onto a large well groomed west-facing garden.

The first floor consists of three good-sized bedrooms and a family sized bathroom, and the loft has been converted into a double bedroom with ensuite.

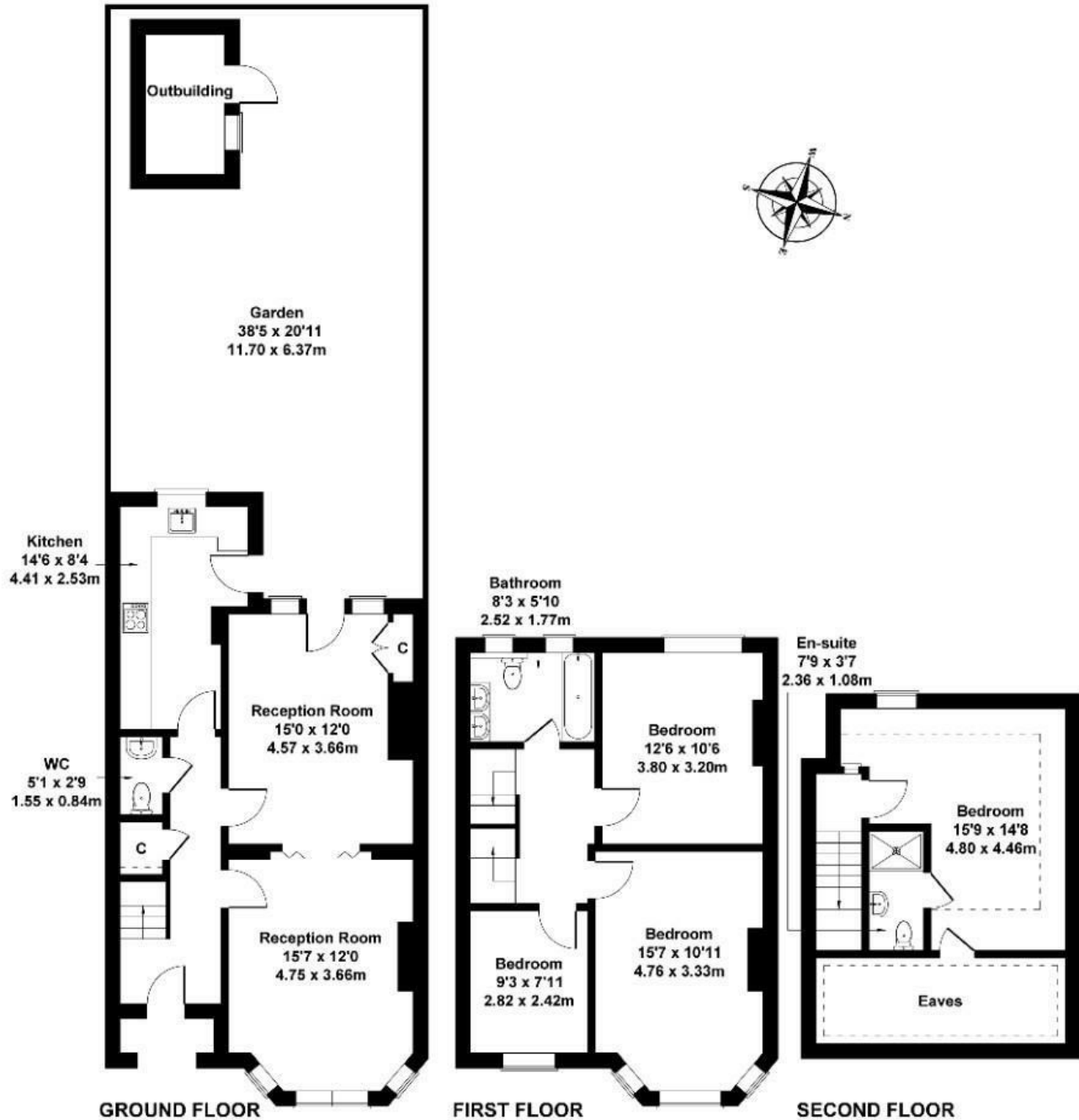
A further benefit is that the property comes with no onward chain.

- Edwardian end of terrace period home
- Newly refurbished
- Four bedrooms
- No chain
- Two bathrooms
- West Facing garden
- Multiple popular local schools
- Brentham Gardens estate
- Close to Ealing Broadway
- Period features

£1,149,000

Winscombe crescent

Approximate Gross Internal Area
1367 sq ft - 127 sq m



Not to Scale. Produced by The Plan Portal 2025
For Illustrative Purposes Only.

Energy Efficiency Rating		
	Current	Potential
Very energy efficient - lower running costs		
(92 plus) A		
(81-91) B		
(69-80) C		
(55-68) D		
(39-54) E	58	
(21-38) F		
(1-20) G		
Not energy efficient - higher running costs		
England & Wales		EU Directive 2002/91/EC